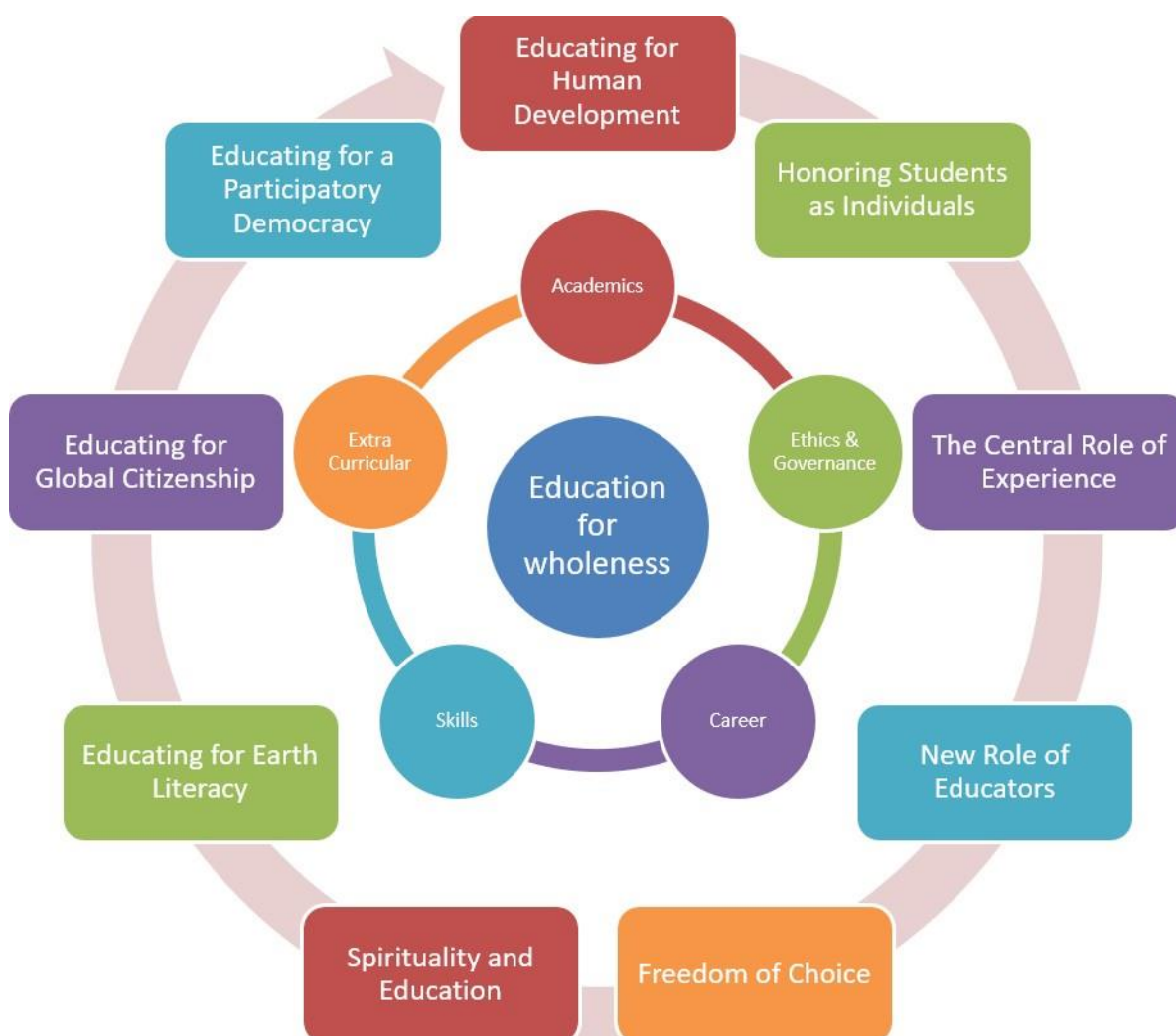


## SSMRV 360° - EDUCATION FOR WHOLENESS

An unique model called 360 degree with 5 dimensional approach was developed for SSMRV College for the holistic development of every individual.

The aim of education is to enable each student to attain all-round development according to his/her own attributes. To achieve this, students should be provided with suitable assistance and guidance in accordance with their abilities and learning needs, so that they can develop their potential to the full.

The concept of “wholeness” at SSMRV is the core of the educational process. Wholeness implies that each academic discipline provides merely a different perspective on the rich, complex, integrated phenomenon of life. SSMRV 360 celebrates and makes constructive use of evolving, alternate views of reality and multiple ways of knowing. It is not only the intellectual and vocational aspects of human development that need guidance and nurturance, but also the physical, social, moral, aesthetic, creative, and in a nonsectarian sense.



**SMRV 360° – EDUCATION FOR WHOLENESS MODEL**

## 5 Dimensional Approach

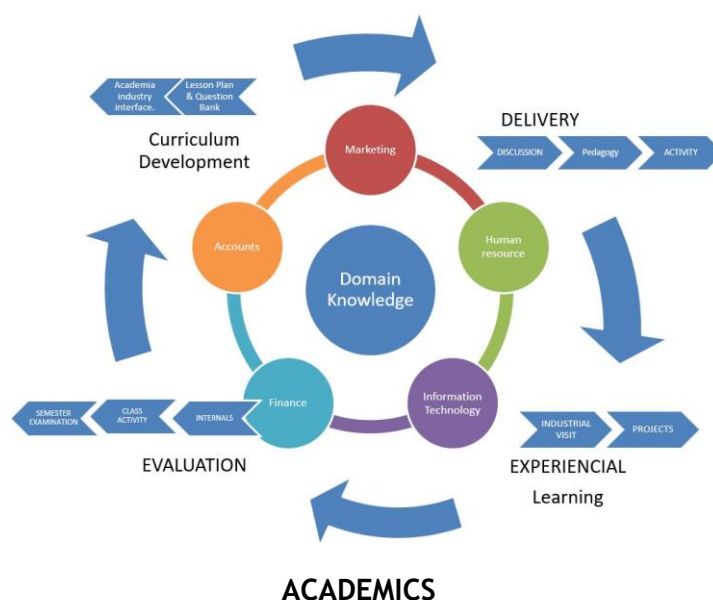
Holistic education is an approach to pedagogy that can meet the needs of all types of learners, that can be a source of fulfillment and gratification for teachers, and that prepare future citizens who will contribute a concern and mindfulness for others, for their communities, and for the planet. It is compatible with both global education and environmental education, which are also based on the principles of interdependence and connectedness. Based on this interdependent perspective, SSMRV seeks to create a society where we live in harmony with the surrounding environment.



**5 Dimensional Approach**

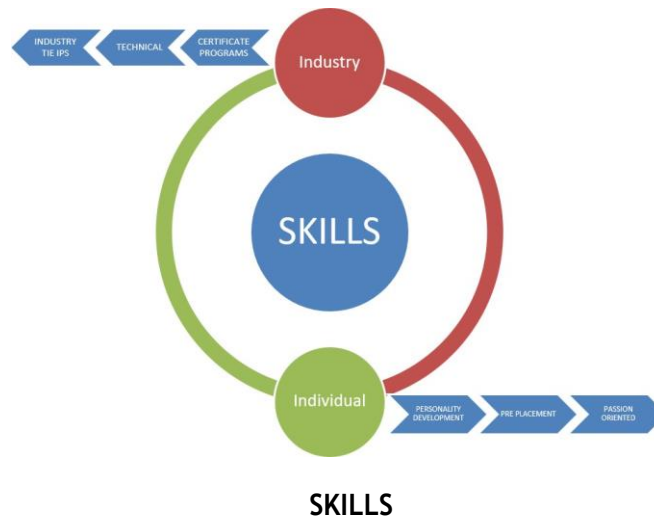
### Academics

At SSMRV with the vast diversity of students from different background and interests, we take an extra step to see to it that students have an array of courses to learn. We impart the knowledge not just by lecture method but also through an interactive, fun filled, enjoyable session. In academics related element of SSMRV we concentrate on domain Knowledge and academics related skills. We offer a wide variety of domain skill related programs and certificate courses.



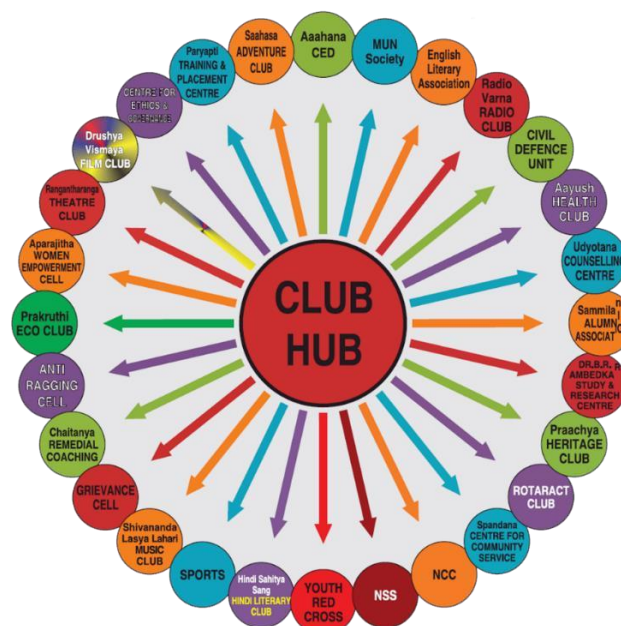
## Skills Development

SSMRV believes in skill development component in students, thus skill development is concentrated on two important platforms. One through industry oriented development programs which is inline with industry requirements and on the other hand its individual skill. Individual skill looks into the factor of overall development of the students, thus SSMRV organizes Personality development and skill development programs.



## Extra curricular

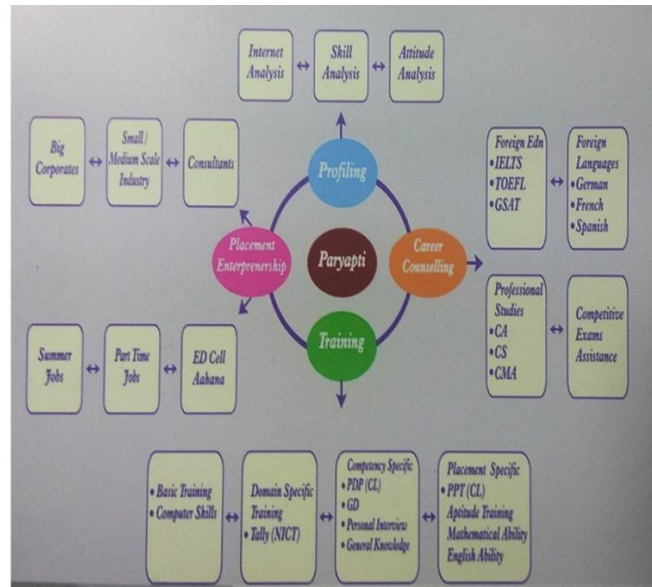
SSMRV has 22 activity centers ACTIVITY CENTERS like CEDI, ADVENTURE CLUB , WOMEN EMPOWERMENT CELL, ECO CLUB, ANTI RAGGING CELL, GREVIENCE CELL, RED CROSS, NSS, NCC , COMMUNITY SERVICE and few others which works for a cause in turn creating a sense of social responsibility in the students. Thus making students socially sensitive and proactive in their approach.



## EXTRA CURRICULAR ACTIVITIES

## Career Development

SSMRV not only concentrates on academics and skill but also has reached the level of success in placing the students in top companies. Career is mainly seen in two dimensions in SSMRV, one in getting placed in corporate and other through entrepreneurship. College has a cell which concentrates on incubating the idea for future world.



**4D MODEL**

## Ethics & Governance

SSMRV is known for maintaining ethics, right from the admission of students till the student gets placed. A designated cell has been formed to impart ethics and governance to the students.



## **IMPACT OF 5D MODEL**

### **Educating for Human Development**

The primary purpose of education is to nourish the inherent possibilities of human development. At SSMRV we facilitate the whole development of all learners. Learning must be the deepening of relationships to self, to family and community members, to the global community, to the planet, and to the cosmos

At SSMRV we facilitate the overall development of the students by engaging them in academics, socially sensitive activities

### **Honoring Students as Individuals**

Each learner is unique, inherently creative, with individual needs and abilities. This means SSMRV welcomes personal differences and fosters in each student a sense of tolerance, respect, and appreciation for human diversity. Each individual is inherently creative, has unique physical, emotional, intellectual, and spiritual needs and abilities, and possesses an unlimited capacity to learn.

### **The Central Role of Experience**

Education is a matter of experience and learning is primarily experiential. SSMRV believes Learning is an active, multisensory engagement between an individual and the world, a mutual contact which empowers the learner and reveals the rich meaningfulness of the world. Experience is dynamic and ever growing. At SSMRV the goal of education is to nurture natural, healthy growth through experience, and not to present a limited, fragmented, predigested “curriculum” as the path to knowledge and wisdom

### **New Role of Educators**

Today’s educators have caught in the trappings of competitive professionalism: tightly controlled credentials and certification, jargon and special techniques, and a professional aloofness from the spiritual, moral and emotional issues inevitably involved in the process of human growth. Holistic education holds, rather, that educators ought to be facilitators of learning, which is an organic, natural process and not a product that can be turned out on demand. Teachers require the autonomy to design and implement learning environments that are appropriate to the needs of their particular students

### **Freedom of Choice**

Students and parents should have opportunities for real choice at every stage of the learning process. Genuine education can only take place in an atmosphere of freedom. Freedom of inquiry, of expression, and of personal growth is required. In general, students are allowed to have authentic choices in their learning. They have a significant voice in determining curriculum delivery and disciplinary procedures, according to their ability to assume such responsibility.



### **Educating for a Participatory Democracy**

Education should be based on democratic values and should empower all citizens to participate in meaningful ways in the life of the community and the planet. The building of a truly democratic society means far more than allowing people to vote for their leaders—SSMRV is empowering individuals to take an active part in the affairs of their community. A truly democratic society is more than the “rule of the majority” — it is a community in which disparate voices are heard and genuine human concerns are addressed. It is a society open to constructive change when social or cultural change is required.

### **Educating for Global Citizenship**

Each individual is a global citizen. Education therefore, should be an appreciation for the magnificent diversity of human experience. Human experience is vastly wider than any single culture’s values or ways of thinking. In the emerging global community, we are being brought into contact with diverse cultures and worldviews as never before in history SSMRV believes that it is time for education to nurture an appreciation for the magnificent diversity of human experience and for the lost or still uncharted potentials within all human beings.

### **Educating for Earth Literacy**

Education must spring organically from a profound reverence for life in all its forms and nurture a relationship between humans and the natural world. SSMRV rekindles a relationship between the human and the natural world that is nurturing, not exploitive. This is at the very core of our vision for the twenty-first century. The planet Earth is a vastly complex, but fundamentally unitary living system, an oasis of life in the dark void of space.

### **Spirituality and Education**

SSMRV believes that all people are spiritual beings in human form who express their individuality through their talents, abilities, intuition, and intelligence. Just as the individual develops physically, emotionally, and intellectually, each person also develops spiritually. Spiritual experience and development manifest as a deep connection to self and others, the fullness of creative experience, and a profound respect for the numinous mystery of life.